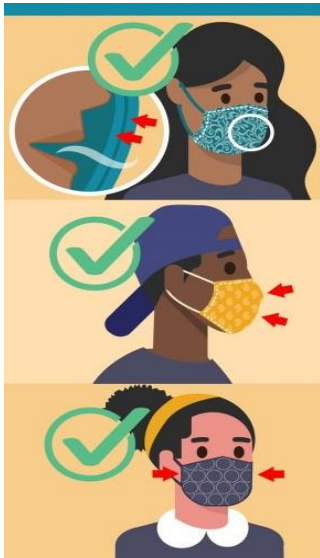


LYNN PUBLIC SCHOOLS
James Leo McGuinness Administration Building – 100 Bennett Street, Lynn, MA 01905
Tel. (781) 593-1680 ~ Fax. (781) 477-7487

Students, staff members and visitors are required to wear a mask while in any Lynn Public School building, in accordance with the recommendations of the Center for Disease Control.

Masks help stop the spread of COVID-19



MASKS SHOULD:

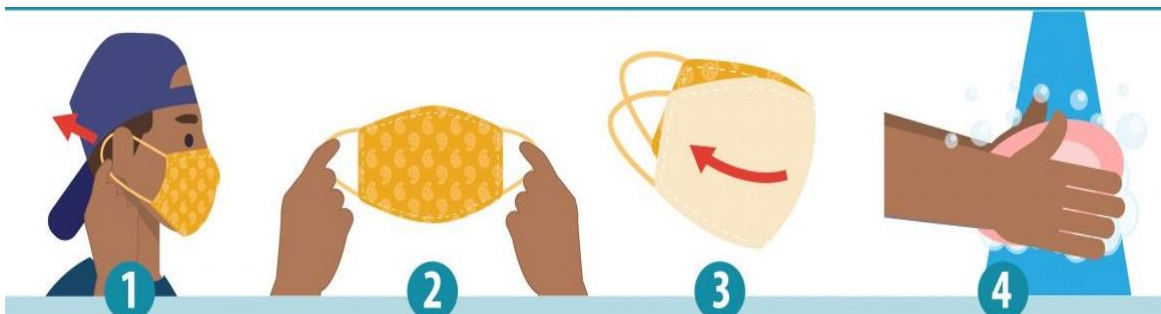
- ✓ Have two or more layers of washable, breathable fabric
- ✓ Completely cover your nose and mouth
- ✓ Fit snugly against the sides of your face
- ✓ Be worn over your nose and mouth and secured under your chin

HOW TO WEAR A MASK:

- ✓ Wear a mask **correctly** and **consistently** for the best protection
- ✓ Be sure to wash your hands before putting on a mask
- ✓ Do **NOT** touch the mask when wearing it

HOW TO TAKE OFF A MASK:

- ✓ Carefully untie the strings behind your head or stretch the ear loops
- ✓ Handle only by the ear loops or ties
- ✓ Fold outside corners together
- ✓ Be careful not to touch your eyes, nose, and mouth when removing
- ✓ Wash your hands immediately after removing
- ✓ Wash your mask regularly



DO NOT WEAR

- ✓ **Neck gaiters, bandanas, or a face shield alone**
- ✓ Masks made of fabric that is hard to breathe in
- ✓ Masks that have exhalation valves or vents which allows virus particles to escape
- ✓ N95 masks intended for healthcare workers
- ✓ Masks around your neck, on your forehead, under your nose, only on your nose, on your chin, dangling from one ear, or on your arm



Around your neck



On your forehead



Under your nose



Only on your nose



On your chin



Dangling from one ear



On your arm

PLEASE NOTE: Masks should NOT be worn by children younger than two, people who have trouble breathing, or people who cannot remove the mask without assistance. Please contact your principal or school nurse if you are unable to wear a mask due to these reasons.