

# SCHOOL COUNCIL

---

FEBRUARY 16, 2022

3:00PM

# MEMBERS

---

Julie Louf – Principal

Alyssa Bravim- Teacher Special Education

Magalie Rowe- Teacher Spanish

Jen Pizzo – Teacher Math intervention

Kim Graham- Parent

Lauren Naugle- Parent

Yahiara Rijo- Parent

Gina Ramirez- Parent

# DISCUSSION POINTS

---

- **Core Values**
- **School and District Improvement Plans**
- **Budget**
- **School Wide Initiatives**
- **School Wide Testing Schedule**
- **Student Activities**

# CORE VALUES

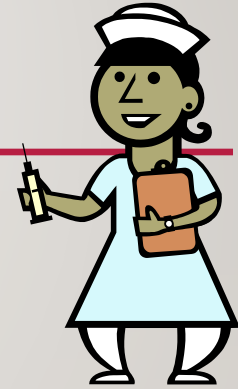
---

- Acceptance
- Shared Responsibility
- Achievement



# OUR SUPPORT STAFF

---



- Guidance Department
- School Social Worker Each Grade
- Bullying Coordinator
- School Resource Officer
- Teen Health Center
- School Nurses
- Intervention Teachers Math and ELA



# SCHOOL IMPROVEMENT GOALS YEAR 3

---

**Provide specific instructional strategies, tools, and professional development to the faculty in order to meet the needs of EL students in the classroom.**

Teachers will meet the needs of diverse learners by providing rigorous standards-based instruction.

Looking at a different focus for SY23

Relationship building

# SCHOOL WIDE TESTING

---

- ACCESS- Completed YAY!
- ELA MCAS- April Grades 6, 7, 8
  - Grade 6 April 5th and 6th
  - Grade 7 and 8 April 7th and 8th
- MATH Grade 6 May 10th 11th Grade 7/8 May 12th 13th
- Science MCAS- May Grade 8 Only May 17th and 18th

# SCHOOL WIDE PROGRAMS

---

- La Respuesta
- MYCAP
- Acceleration Road Map
- Reimagining Schools- Parent Survey Next – Student survey and Staff
- Advisory
- Intervention – ELA Math Targeted support in school afterschool



# STUDENT ACTIVITIES AND PROJECTS

---

- Black History Month
- All Stars
- Extracurricular Activities
  - Cooking (FOOD TRUCK)      Gaming Club
  - Drama      Big Brother Big Sister
  - Newspaper      LGBTG
  - Intramurals      Anime Club
- Chorus – Starting
- Athletics- BBALL / Cheering/ Staff Game

# DATES TO REMEMBER

---

- 2/21-25 Winter Break
- Progress Reports 3<sup>rd</sup> Quarter 3/11
- Next meeting 3/23

# ENROLLMENT

---

- Breed Middle School – 1244
- Marshall Middle School – 1283
- Pickering Middle School - 554

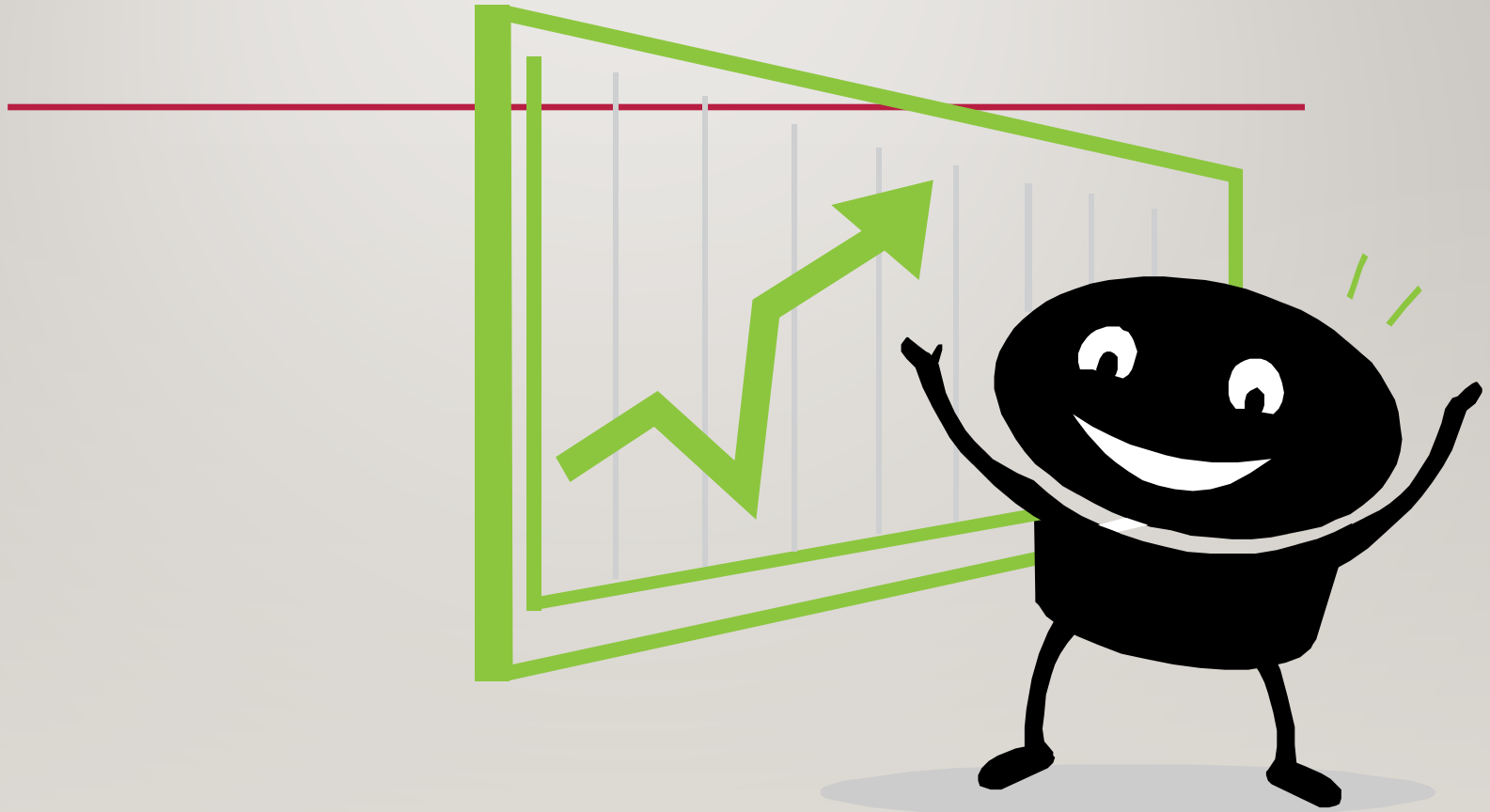


# BUDGET REQUESTS

---

- Positions – Department Head to support teachers and students Science and English Learners
- Support staff for teachers
- Supplies
- Ideas for Parent Involvement

# FOR THE GOOD OF THE SCHOOL!



Next meeting 3/23 9AM

