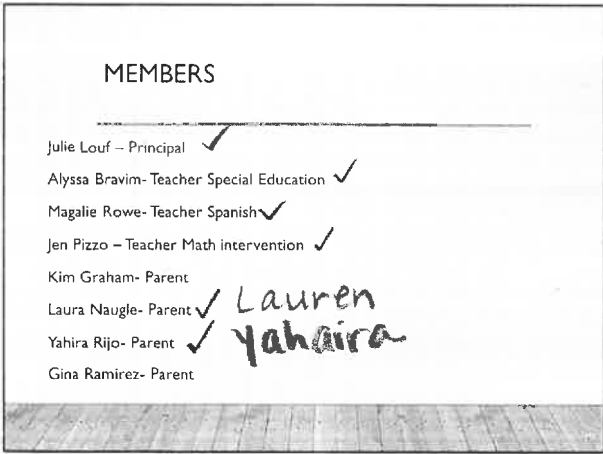


1



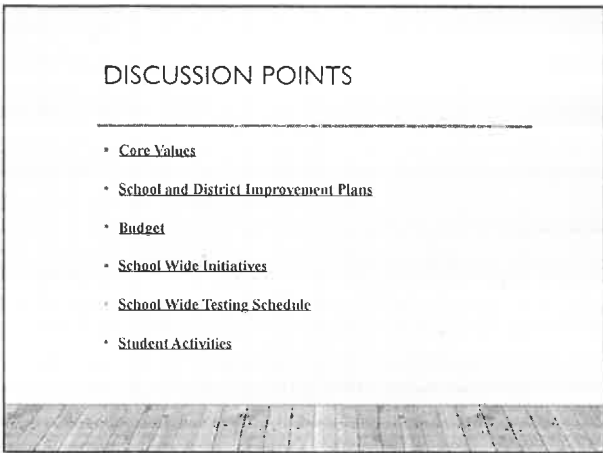
2

also in attendance

- Jenny Winter

- Mike Zimirowski


- all members introduced themselves



3

CORE VALUES

- Acceptance **#1 core value**
- Shared Responsibility
- Achievement

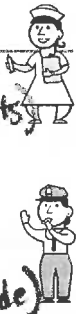


4

-want to be seen in every classroom

OUR SUPPORT STAFF

- Guidance Department **(travels w/ students)**
- School Social Worker Each Grade
- Bullying Coordinator - **Mrs Cooney**
- School Resource Officer - **Mr Lee**
- Teen Health Center
- School Nurses
- Intervention Teachers Math and ELA **(2 per grade)**



5

SCHOOL IMPROVEMENT GOALS YEAR 3

Provide specific instructional strategies, tools, and professional development to the faculty in order to meet the needs of EL students in the classroom.

Teachers will meet the needs of diverse learners by providing rigorous standards-based instruction.

Looking at a different focus for SY23

→ relationship building

6

-developed pre-covid and looking to create a new plan to start next year

we will always have this and incorporated blended learning this year

SCHOOL WIDE TESTING

- ACCESS- Completed YAY!
- ELA MCAS- April Grades 6, 7, 8
- MATH MCAS- May Grades 6, 7, 8
- Science MCAS- May Grade 8 Only
- Testing Dates

↓
May 17 : 18

late starts for grades NOT testing, except for Science

Gr 6 Apr 5 : 6

Gr 7 : 8 Apr 7 : 8

Gr 6 May 10 : 11

Gr 7 : 8 May 12 : 13

7

SCHOOL WIDE PROGRAMS

- La Respuesta
- MYCAP → college + career planning
- Acceleration Road Map
- Reimagining Schools- Parent Survey Next – Student survey and Staff
- Advisory → more focused next year
- Intervention – ELA Math Targeted support in school
- afterschool → prior to MCAS testing

with DESES

- data from reimagining surveys available at next meeting

La Respuesta → families to come in to be hall monitors in the school

8

STUDENT ACTIVITIES AND PROJECTS


- Black History Month
- All Stars - run by Mrs Phelps w/ DA's office support
- Extracurricular Activities
 - Cooking (FOOD TRUCK) Gaming Club → biggest new club
 - Drama Big Brother Big Sister
 - Newspaper LGBTQ
 - Intramurals Anime Club
- Chorus - Starting
- Athletics- BBALL / Cheering/ Staff Game

} all activities announced daily

9

DATES TO REMEMBER



- ~~2/15-2/19~~ Winter Break **2/21 - 2/25**
- Progress Reports 3rd Quarter
- Next meeting



10

ENROLLMENT


- Breed Middle School - 1244
- Marshall Middle School - 1283
- Pickering Middle School - 554

11

BUDGET REQUESTS

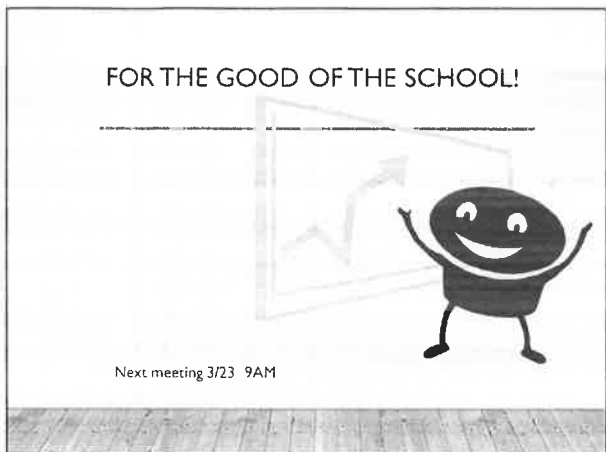
- Positions - Department Head to support teachers and students Science and English Learners
- Ideas for Parent Involvement
- **support staff for teachers**
- **Supplies - printers, materials**



12

-not enough space in building for additional clusters

-need ideas for parent involvement



-Parent liasons have been
a big asset
